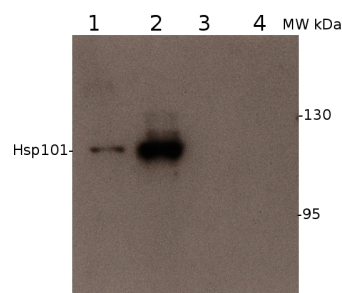


Product no **AS08 283****Anti-HSP101 | ClpB heat shock protein, N-terminal (chicken antibody)****Product information**

Immunogen	recombinant <i>Arabidopsis thaliana</i> Hsp101/ClpB, N-terminal 145 amino acids UniProt: P42730 , TAIR: At1g74310
Host	Chicken
Clonality	Polyclonal
Purity	Purified, total IgY (chicken egg yolk immunoglobulin) in PBS pH 8. Contains 0.02 % sodium azide.
Format	Liquid
Quantity	200 µl
Storage	Store at 4 °C; make aliquots to avoid working with a stock. Please remember to spin the tubes briefly prior to opening them to avoid any losses that might occur from material adhering to the cap or sides of the tube.

Application information

Recommended dilution	1 : 1000 (WB)
Expected apparent MW	101 kDa
Confirmed reactivity	<i>Arabidopsis thaliana</i>
Predicted reactivity	<i>Glycine max</i> , <i>Nicotiana tabacum</i> , <i>Vitis vinifera</i> Species of your interest not listed? Contact us
Not reactive in	No confirmed exceptions from predicted reactivity are currently known

Application example

2 µg of total protein from (1) *Arabidopsis thaliana* WT stressed at 22°C, (2) *Arabidopsis thaliana* WT stressed at 38°C for 1.5 hour followed by a transfer to 22° for 2 hours, (3) *Arabidopsis thaliana* Hsp101 null mutant grown at 22°C, (4) *Arabidopsis thaliana* Hsp101 null mutant stressed at 38°C for 1.5 hour followed by a transfer to 22°C for 2 hours were separated on **8 % SDS-PAGE** and blotted 1h to **nitrocellulose** (Biorad). Blots were incubated in the primary antibody at a dilution of 1: 1 000 for 1h at room temperature with agitation and a secondary HRP-conjugated antibody (1: 10 000).